

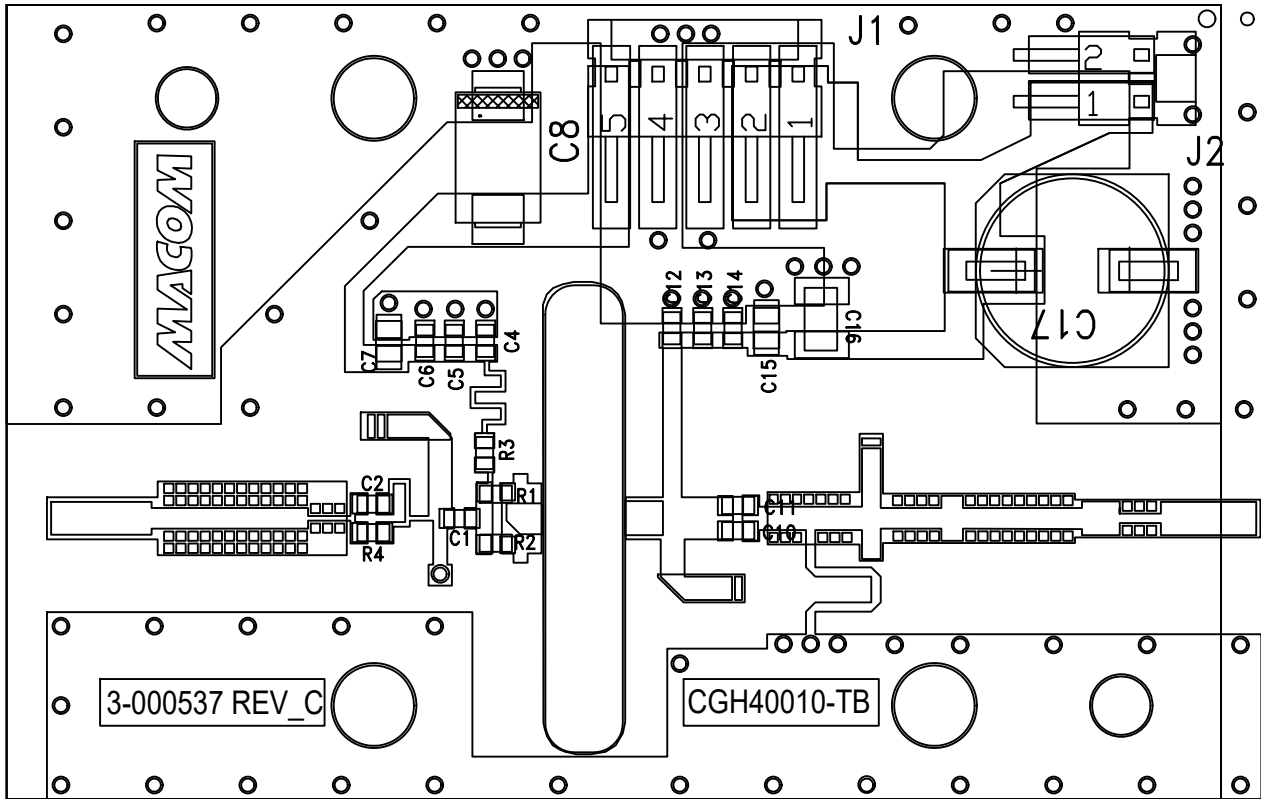
CUSTOMER + RF PRODUCTION VERSION

NOTES: UNLESS OTHERWISE SPECIFIED

- 1. FOR PART LIST REFERENCE PL-838120
- 2. ALL SOLDER JOINTS ARE TO BE MADE USING Sn62
- 3. REFERENCE DESIGNATORS ARE FOR REFERENCE ONLY
- 4. AND MAY NOT APPEAR ON PART.
- 5. COMPONENTS TO BE ORIENTED ONLY IN THE DIRECTION SHOWN.
- 6. USE SWEAT SOLDER FIXTURE 4-001507 FOR COMPRESSING PCB (ITEM 1) TO BASEPLATE (ITEM 2).
- 7. REMOVE ALL SHARP BURRS AND EDGES.

NOTES: FOR PRODUCTION VERSIONS

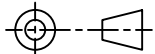
- 7 CUT WEAR BLOCKS FROM ITEM 5 AS FOLLOWS: .300 X .240 FOR 2 LEADS. CLEAN AND TIN SOLDER SOLDER SIDE OF WEAR BLOCKS BEFORE SOLDERING. CLEAN WEAR BLOCKS AFTER SOLDERING TO REMOVE FLUX.
- 8 MILL WEAR BLOCKS DOWN TO OBTAIN A FLATNESS OF .001. THEN, MILL BASEPLATE CHANNEL AS SHOWN IN VIEW B-B.



REVISIONS				
ZONE	REV	DESCRIPTION	REVISED BY	DATE
	1	INITIAL RELEASE		
	2	UPDATED SLOT DIMS	SMW	05/23/2007
	3	ADDED PRODUCTION FIXTURES	SMW	07/21/2009

UNLESS OTHERWISE SPECIFIED
INTERPRET DRAWING PER ASME Y14.100
DO NOT SCALE THIS DRAWING

NOTE: THIS DRW INCORPORATES
THIRD ANGLE PROJECTION



MACOM Technology Solutions
CONFIDENTIAL INFORMATION SUBJECT TO NDA

The information contained in this document or material is the valuable and confidential property of MACOM Technology Solutions Holdings, Inc. and/or its subsidiaries or affiliates (collectively "MACOM"), provided to you subject to a non-disclosure agreement between you and MACOM solely for use in supporting MACOM's business as and to the extent MACOM authorizes in writing from time to time. This information shall be held in strictest confidence and shall not be reproduced, published, disclosed to others, or used for any purpose except as and to the extent specifically authorized by MACOM in a separate written agreement. If permission is granted for reproduction, this legend must be included in any and all copies. This document or material shall be promptly returned to MACOM or destroyed upon request, completion of the use for which it was made available to recipient, or termination of MACOM's relationship with recipient, whichever first occurs.

UNLESS OTHERWISE SPECIFIED
DIMENSIONS ARE IN INCHES AND
INTERPRETED PER ASME Y14.5

TOLERANCES ON

DECIMALS	ANGLES
.X ± .1 .XX ± .02 .XXX ± .005 .XXXX ± .0005	±0.5°

UNLESS OTHERWISE SPECIFIED
63° ALL OVER

MATERIAL	X
FINISH	X



TITLE
TEST FIXTURE,
CGH40010F

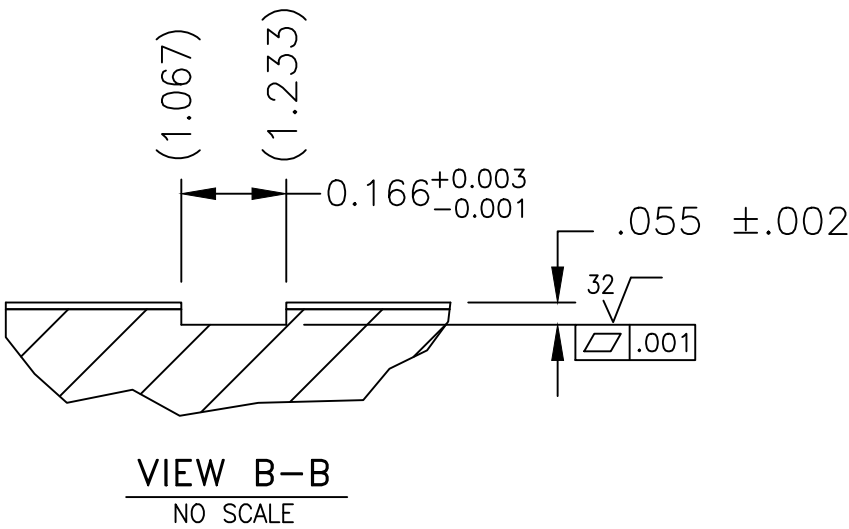
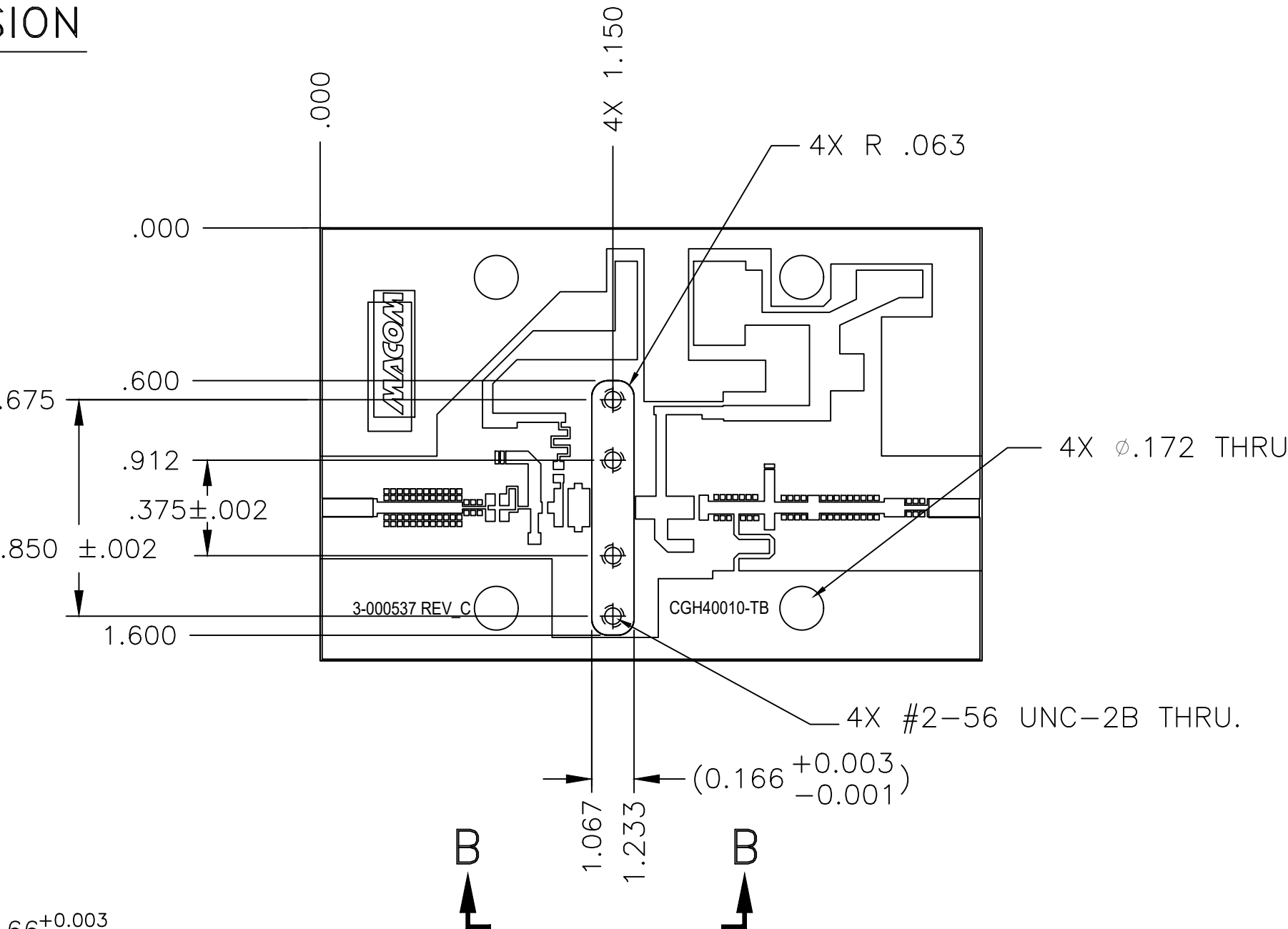
SIZE
B

DRAWING NO.
DC-0037474

REV
D

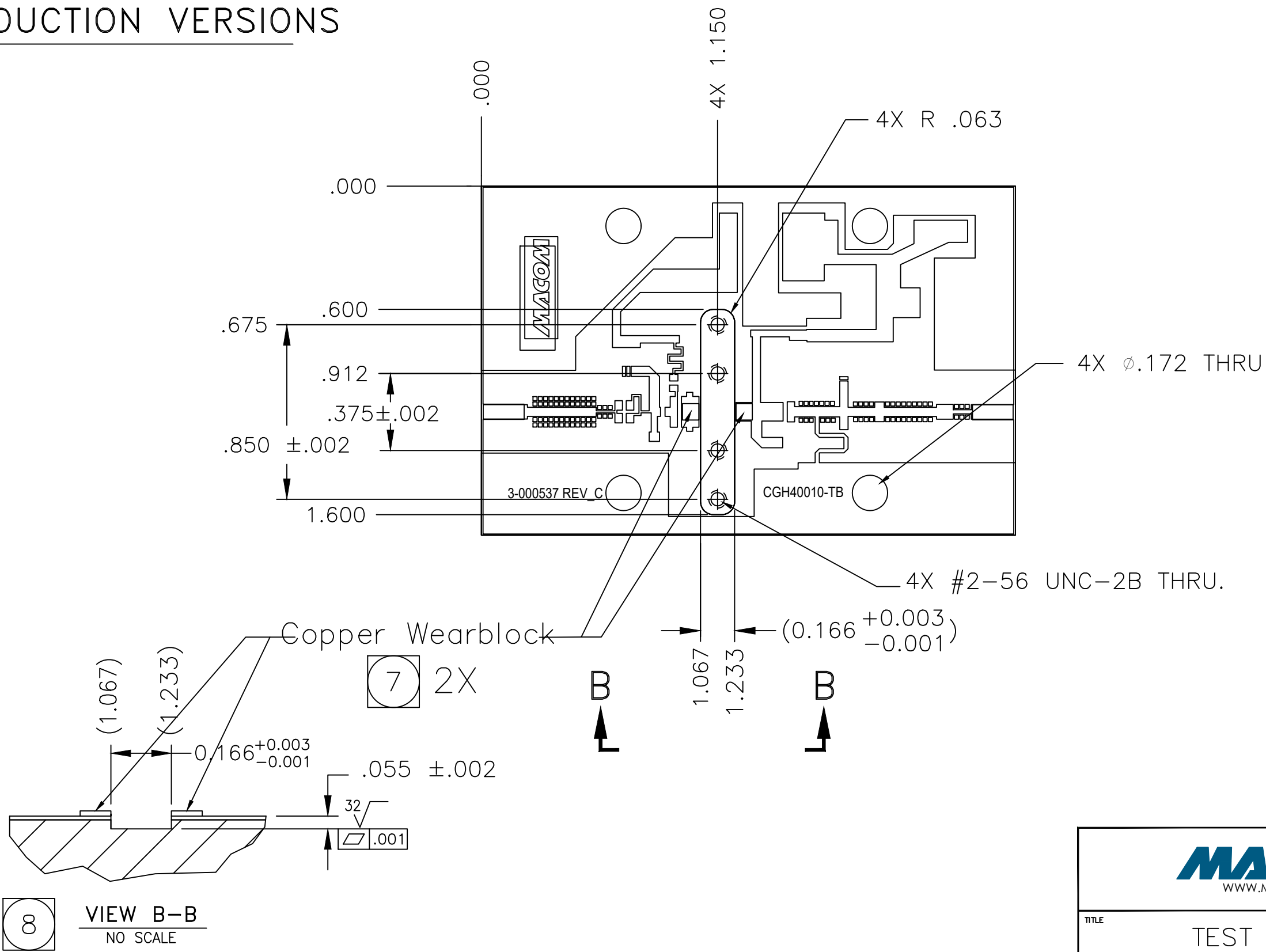
SCALE: 1:1
PACKAGE TYPE: ASSEMBLY
SHEET 1 OF 4

CUSTOMER VERSION



TITLE			
TEST FIXTURE, CGH40010F			
SIZE	DRAWING NO.	REV	
B	DC-0037474	D	
SCALE:	1:1	PACKAGE TYPE:	ASSEMBLY SHEET 2 OF 4

PRODUCTION VERSIONS



MACOM
WWW.MACOM.COM

TITLE
TEST FIXTURE,
CGH40010F

SIZE
B

DRAWING NO.
DC-0037474

REV
D

SCALE:
1:1

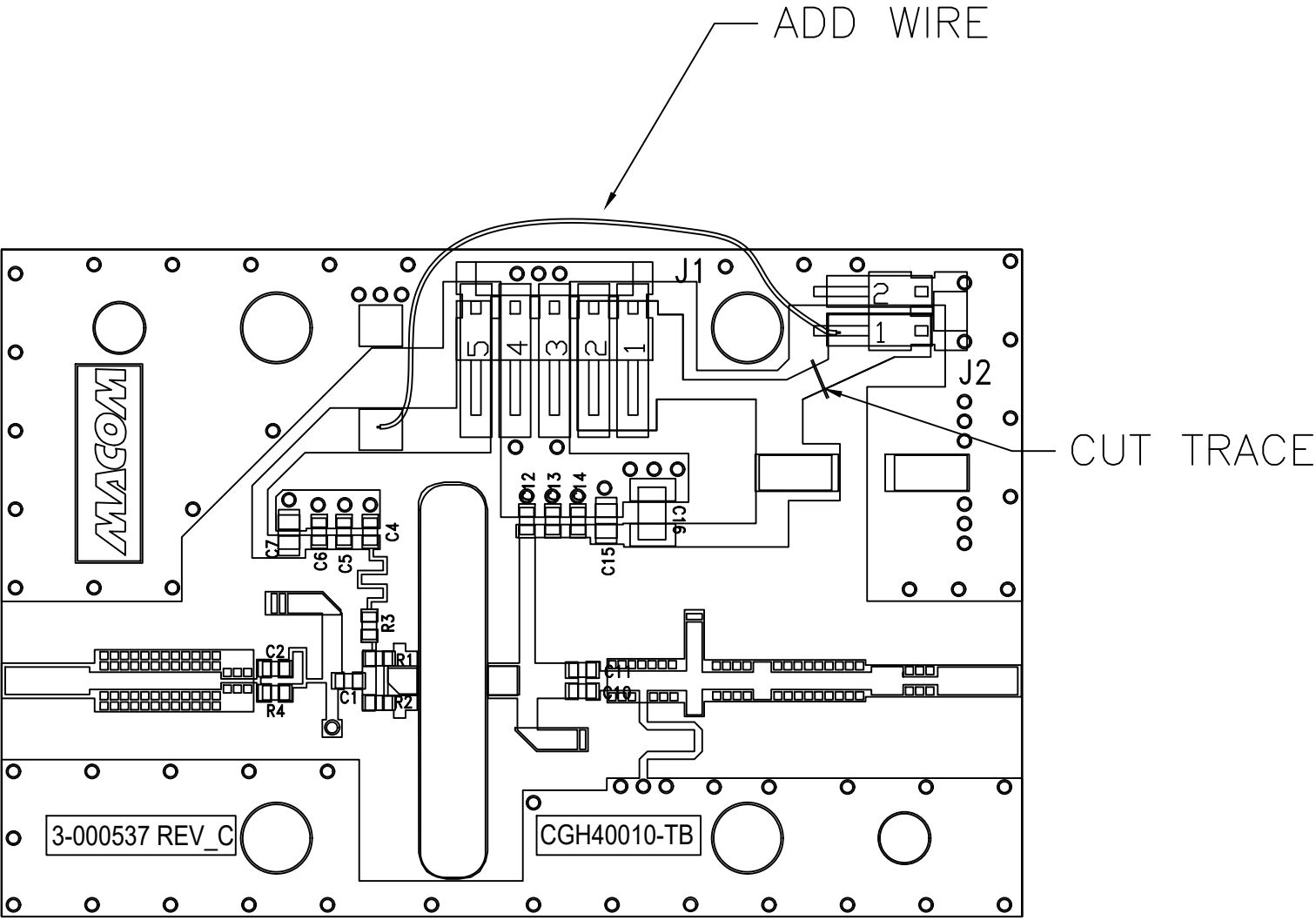
PACKAGE
TYPE:
ASSEMBLY

SHEET
3 OF 4

DC PRODUCTION VERSION

NOTES: UNLESS OTHERWISE SPECIFIED

- 1. REMOVE C8 AND C17
- 2. CUT TRACE AS MARKED
- 3. ADD WIRE AS INDICATED



TITLE			
TEST FIXTURE, CGH40010F			
SIZE	DRAWING NO.		REV
B	DC-0037474		D
SCALE:	1:1	PACKAGE TYPE:	ASSEMBLY SHEET 4 OF 4